

Heathfield.





Welcome to

Heathfield.

Where Life Flows Peacefully.

An exceptional master-planned community beckons. Welcome to Heathfield, a collection of 182 home sites that offers a familiar village lifestyle. Just over 30kms from the City, Heathfield is positioned in Fraser Rise – part of the greater Caroline Springs and Plumpton area that is fast becoming a neighbourhood of choice for discerning home buyers. Daily life within the community moves at a refreshing pace. Children ride their bikes in the quiet tree-lined streets, and neighbours become friends that you meet at the local park.

At Heathfield, you're always within reach of revitalising green spaces and inviting spots to enjoy reflection or socialising; it's a quiet sanctuary that's still handy to shopping, dining and fun activities. In every way, living at Heathfield is living well.

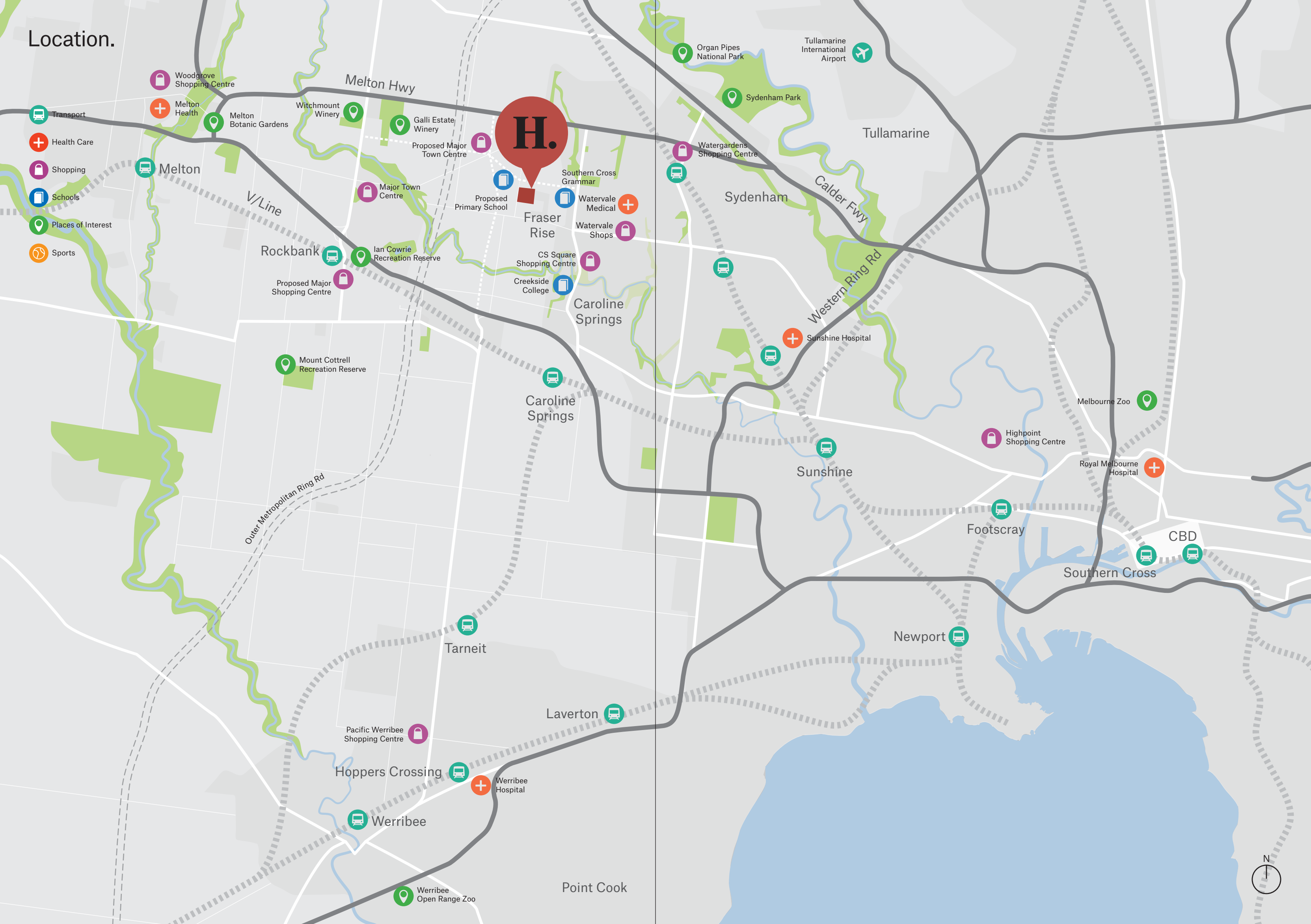
The land lots at Heathfield are offered in sizes to suit everyone, from couples to large families. Trees line the streets, providing a verdant outlook, and there is plenty of space to create front and back gardens with lawns, vegetable patches, and shady nooks.

Melbourne CBD

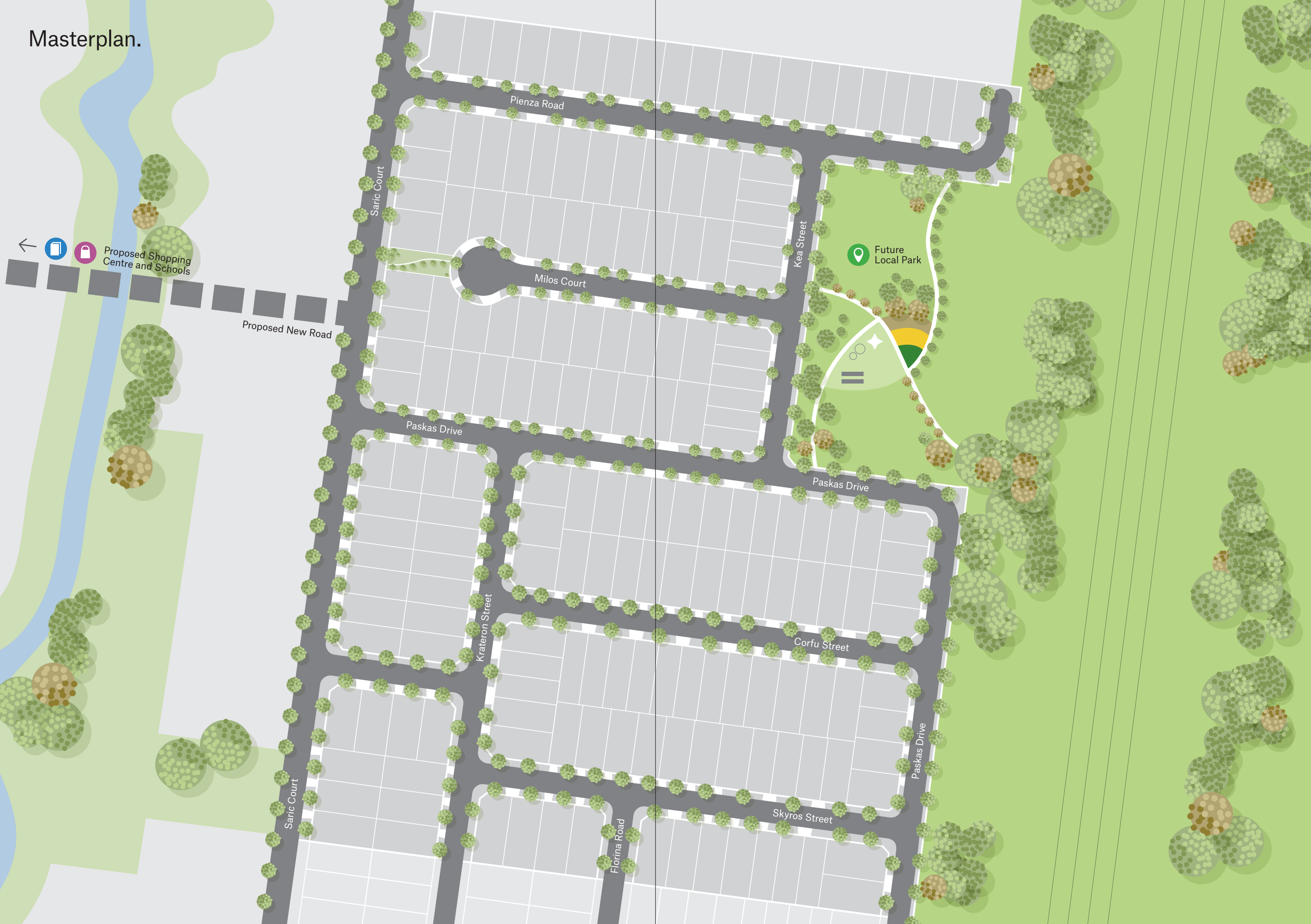
Caroline Springs



Location.



Masterplan.



Where New Friends Are All Around You.

One of the ways Heathfield maintains its calm and neighbourly character is thanks to its smaller scale. Each of its 182 land lots has been carefully laid out to create a dedicated slice of space and privacy, while still encouraging connections with other residents living on your street. Here, leafy boulevards make great places for families to play a game of cricket or kids to ride their bikes, as the smaller number

of houses means fewer cars on the road. New friends are never far away – as every home is within easy walking distance. Along the eastern border of Heathfield, a local park with a playground, pristine lawns and picnic facilities provides a central and inviting green space to spend sunny days and warm evenings.

Where Excitement Is Never Far Away.

Only five minutes' drive from Heathfield you'll find the thriving Caroline Springs. Brimming with natural delights and urban entertainment, this vibrant suburb provides plenty in the way of convenience and fun. CS Square is home to everything from major supermarkets, retailers and banks, to cute cafés, hair salons and providores with locally sourced delicacies.

For night-time activities or even weekend stay-cations, Mercure Melbourne Caroline Springs offers four star accommodation and delicious dining. The café, and sports bar are popular with locals, and the award-winning bistro serves fine fare against the picturesque backdrop of Lake Caroline.



Where Nature Is Your Neighbour .

Everything at Heathfield encourages wellbeing and spending time together outdoors, from the leafy streets to the surrounding reserves. A local park within the development itself is a great place to catch up with neighbours after work, while kids enjoy climbing on the playground. Beyond Heathfield, all around the development are beautiful places to connect with nature. In Caroline Springs, a number of lakes and reserves offer charming picnic spots. Lake Caroline and the Town Centre Recreation Reserve offer lovely settings for an evening stroll and the proposed Kororoit Reserve will provide a vast landscape of waterways, native flora and rocky outcrops.

Less than 20 minutes drive away, the picturesque Organ Pipes National Park is an enticing destination for Saturday hikes among towering natural stone columns. Brimbank Park, a little to the southeast, features stunning cycling and walking trails along the Maribyrnong River. Here, you can begin or end your stroll with a hot tea or fresh latte from a coffee shop in the park. The Melton Botanic Gardens are a wonderful day trip for families with children, with gardens filled with traditional 'bush foods'.

For those happy to venture a little further, there are many natural wonders to discover less than one hours' drive from Heathfield. Lerderberg State Park features stunning forests, lakes and rivers to explore throughout the day or camping over a weekend, and it's only half an hour away by car. Around nearby Mount Macedon sit a number of popular wineries. Take in the view while sipping a Pinot Grigio to cap off a hike through Stanley Park. Just under an hour to the north, the oasis of Turpins Falls beckons. A spectacular waterfall and swimming hole, it is perfect for adventures with friends.



Where You Can
Enjoy the Quiet Life
Close to the City.

Just over 30kms from the CBD, Heathfield offers the best of everything. A charming haven full of neighbourly chatter, its homes still benefit from close proximity to city conveniences and major attractions.

Already a vibrant community, the surrounds continue to improve, with more supermarkets, restaurants, schools and childcare in development. A tempting array of cafés with brunch and coffee rivalling any in the inner city can be found across Plumpton, Fraser Rise and Caroline Springs, including Go West Eatery and Tuckshop, Billy's Paddock, Brew Brotherz and Mr. Nomane.





Where Getting There Is Easy.

If you'd like to venture into the city for a Saturday brunch, you can choose from a number of bus routes. You can also jump on the train from Caroline Springs and arrive in the city in less than half an hour. If you prefer to drive, two major highways will have you in the city in less than 40 minutes, and for those longer journeys, Melbourne Airport is only a 20-minute drive away.

Caroline Springs and the surrounding areas also offer a wide range of first-class primary and secondary schools, as well as childcare facilities for the younger ones. Brookside P-9 College, Creekside College, Kororoit Creek Primary School, Lakeview Senior College, Early Discoveries Pre-school and Cobblestone Family Day Care, among others, are all a short drive away.

Developed by

Goldfields

Goldfields has forged an enviable reputation delivering distinctive residential environments of superior design and style. The Goldfields brand is synonymous with quality, and its expert team are committed to creating residential environments that reflect the way people want to live today and into the future.

The Goldfields team has a wealth of experience across many facets of property development, including residential apartments and townhouses, master-planned communities and mixed-use projects.

goldfieldsgroup.com.au

Developed by

Goldfields